

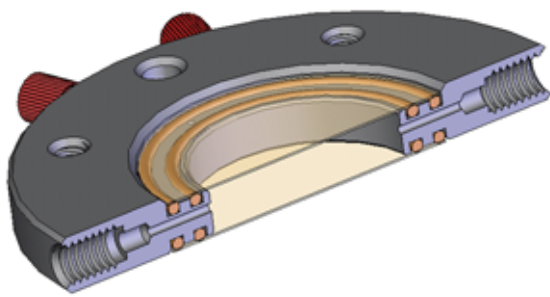
Vacu-Cell™ System

Mini Perfusion Chamber, Large Window Model MPC-LW

The Mini series Large Window Perfusion Chamber uses two round 25 mm coverslips to form perfusion chamber. Dual o-rings on the bottom and top of the chamber body securely hold the coverslips in place. Each coverslip is held using a separate vacuum port, so they can be used independently. The observation window measures 17.5 mm diameter.

When the Model MPC-LW is used with two coverslips, a circular chamber is formed with the two coverslips spaced by 3.7 mm. The total volume in the observation window is approximately 890 μ l. The perfusion ports are configured for use with 1/16 OD tubing. The perfusion ports direct fluid flow from one end to the other between the two coverslips.

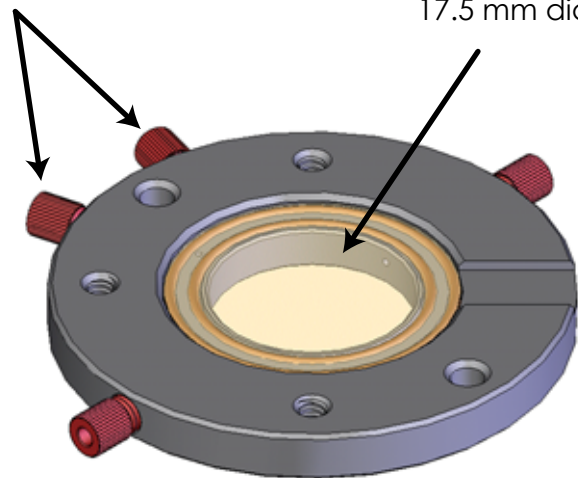
The lower coverslip can be used without the upper coverslip to fashion an open chamber configuration, allowing access to the coverslip surface. The top coverslip can be added at any time to close the chamber for perfusion. Temperature is controlled using a heated microscope adapter. This perfusion chamber works well using either an inverted or standard microscope. This chamber is available in black anodized aluminum and is coated with parylene for biological compatibility.



Model VC-MPC-LW
(sectioned view)

Top and bottom
vacuum ports

The observation
window measures
17.5 mm diameter



Model VC-MPC-LW
(top view)

Model Numbers

VC-MPC-TW-BA	Large Window MPC, Black Anodized Aluminum
VC-25RCS-1	25 mm No. 1 Round Coverslips Box of 160
VC-25RCS-2	25 mm No. 2 Round Coverslips Box of 110
VC-MPC-LW-ORINGS	O-rings for MPC-LW, 5 Sets

Patent Pending

C&L Instruments, Inc.
www.fluorescence.com
717-564-9491